

# 4" GU10 DEEP ADJUSTABLE RECESSED FIXTURE

## DESCRIPTION:

The 4" GU10 Deep Adjustable Recessed Fixture is designed for directional lighting with its adjustable gimbal mechanism. Built from high-quality aluminum alloy and finished with a white powder coating, this fixture provides both functionality and aesthetics. It is compatible with most GU10 LED modules and works seamlessly with low-voltage wiring (bulbs and wiring sold separately). Ideal for various indoor environments, this versatile fixture offers focused and customizable illumination.



## FEATURES:

- High-quality aluminum alloy construction with a durable white powder-coated finish.
- Adjustable gimbal for precise directional lighting.
- Dimmable for personalized lighting preferences.
- Sleek and modern design suitable for various interior styles.

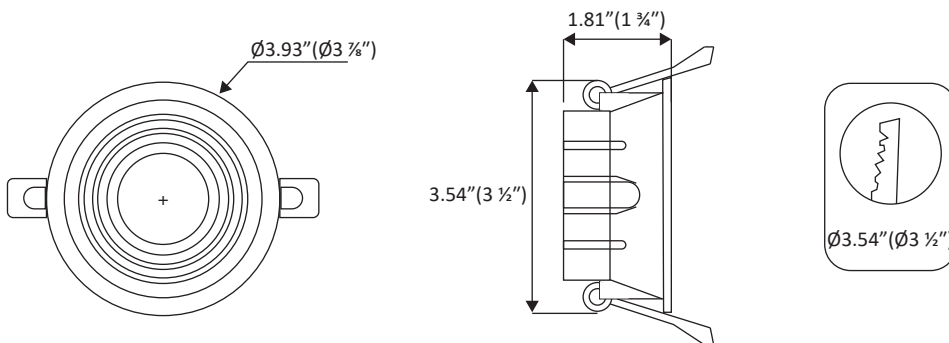
## APPLICATIONS:

- Residential spaces
- Office buildings
- Retail stores
- Hotels
- Parking lots
- Exhibitions and clubs

## TECHNICAL SPECIFICATIONS:

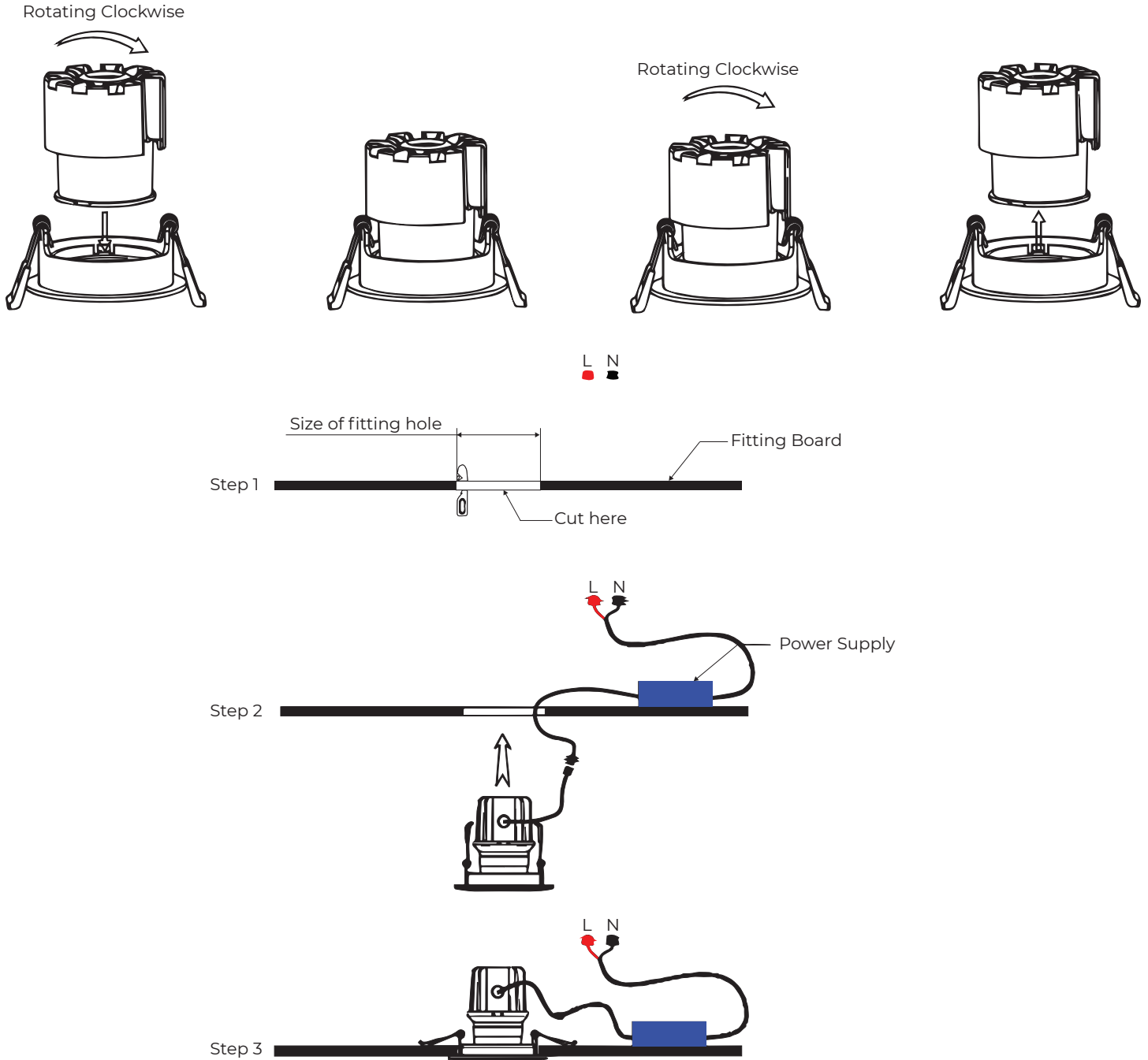
Fixture Dimensions	3.93" (D) x 1.81" (H)
Cutout Dimensions	3.54" (D)
IP Rating	IP20
Adjustability	Rotates on 4 sides for directional focus
Surface Color Options	White or Black
Working Temperature	14°F to 122°F
Compatible Bulb	GU10 (Sold Separately)

## DIMENSIONS:



## INSTALLATION INSTRUCTIONS:

1. Cut an appropriately sized hole for the fixture.
2. Turn off all power sources. Connect the switch and input wire to the power supply, then connect the light and securely install the fixture.
3. Complete the installation process and restore power.



## SAFETY GUIDELINES:

1. Always turn off the power before installation. Secure the fixture in the installation holes and ensure power connections are sealed properly.
2. Verify compatibility with the applicable power supply before use.
3. Ensure the product's switch is turned off before connecting to the power supply to prevent electric shock.
4. Improper installation or use may result in property damage or pose safety hazards.
5. Calculate the required quantity of LED lights based on the power rating of each light and plan the power supply accordingly.
6. High voltage is dangerous. Maintenance should only be performed by qualified professionals.
7. Avoid operating the lamp for more than 10 hours per day to prolong its lifespan.