

DOUBLE WIDE SHALLOW ALUMINUM CHANNEL

DESCRIPTION:

The Double Wide Shallow Aluminum channel is designed to be used with double row LED strip lights of width up to 0.79 inches. This versatile channel is ideal for various lighting applications, features a silver anodized surface for enhanced durability and appearance.



FEATURES:

- Dual Capacity: Accommodates two single-color strips or one wide strip.
- Durable Build: Made from high-quality Aluminum 1060.
- Versatile Finish: Available in a sleek silver anodized finish.
- Easy Installation: Compatible with clear or frosted PC covers (sold separately).
- Lengths: Available in 3.2ft. and 6.4ft. options.

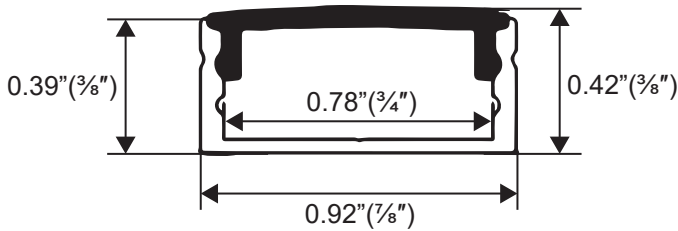
APPLICATIONS:

- Under-cabinet lighting
- Retail displays
- Outdoor entertainment areas
- Accent lighting
- Cove lighting

TECHNICAL SPECIFICATIONS:

Material	Aluminum 1060 & Polycarbonate (PC)
Surface Processing	Silver Anodization
Length Options	3.2ft. or 6.4ft.
Finish	Silver
PC Cover Options	Clear or Frosted (sold separately)
Compatible LED Strip Width	Up to 0.79 in.
Recommended LED Density	36.6 LEDs per foot to avoid spotting
IP Rating	IP20

DIMENSIONS:



ORDERING GUIDE:

SKU: AE-2310-Double Wide Slim-1M		
Model	Type	Size
AE - 2310 (Aluminum Extrusion)	Double Wide Slim	1M 2M

ACCESSORIES:



Double Wide Shallow Channel End Cap
SKU: AE-2310-CAP



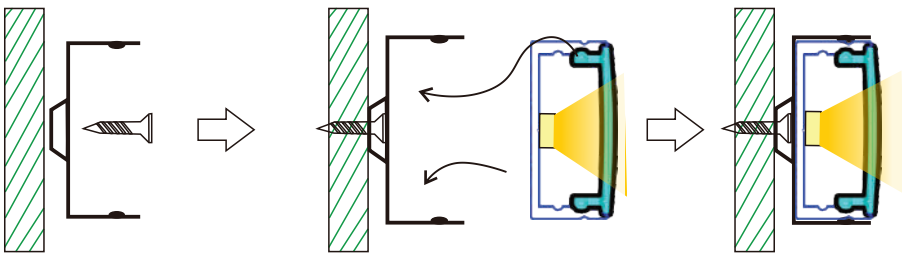
Double Wide Shallow Channel Bracket (Plastic)
SKU: AE-2310(PC)-MNT



Double Wide Shallow Channel Cover (Clear or Frosted)
SKU: AE-2310-CVR-FRS-1M
AE-2310-CVR-FRS-2M
AE-2310-CVR-CLR-2M

ACCESSORIES:

1. Using Mounting Clip



2. Using Double-Sided Tape

