

LED LINEAR HIGH BAY

DESCRIPTION:

The MLH07 Linear High Bay series offers outstanding energy efficiency, superior light uniformity, and long-lasting performance, while also minimizing project costs. It is suitable for both retrofits and new installations. The compact design simplifies installation, saving time and effort. Each model allows for selectable CCT (Correlated Color Temperature) and wattage, providing flexibility during installation.

FEATURES:

- Color-selectable light engines with two CCT options: 4000K and 5000K
- Long LED lifespan based on IES LM-80 results and TM-21 calculations
- Supports universal input voltage: 120-277VAC or 347-480VAC
- Wattage Adjustable: 100%, 80%, 60%, 40%
- 0-10V dimming capability, ranging from 100% to 10%
- High performance: Power Factor (PF) > 90%, Total Harmonic Distortion (THD) < 20%, and 6KV surge protection
- Wide operating temperature range: -40°F to +122°F



205W



300W



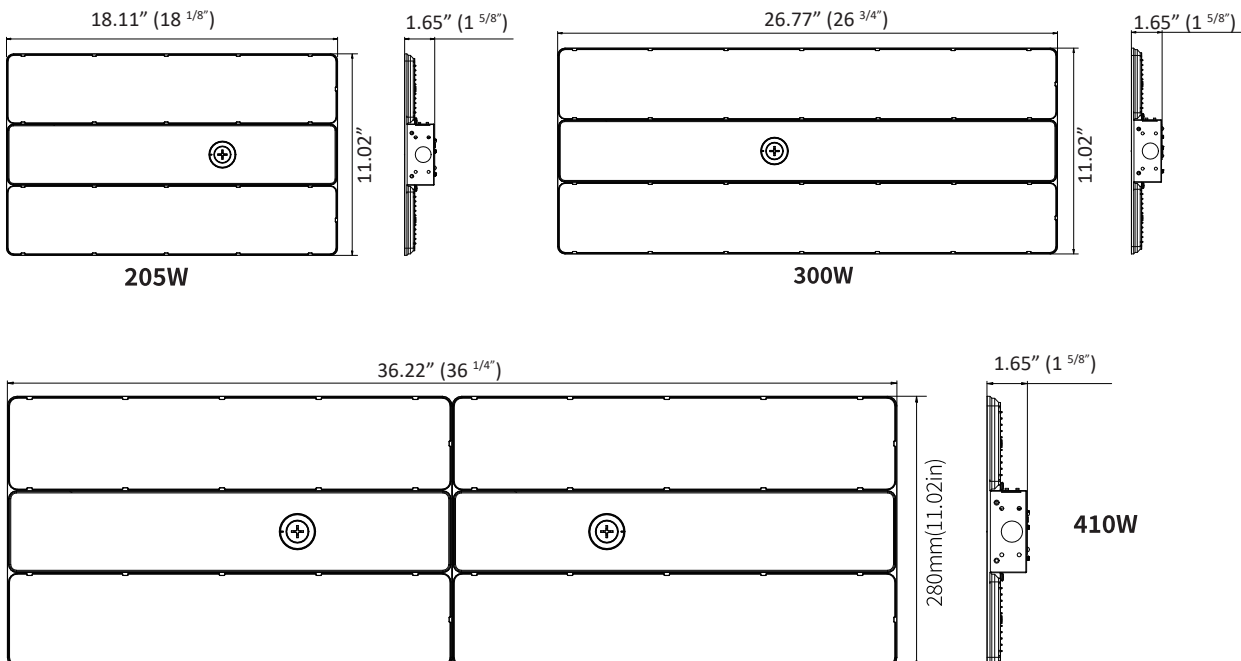
410W



APPLICATIONS:

- Commercial applications
- Retail spaces
- Institutional settings
- Gymnasiums
- Factories
- Warehouses

DIMENSIONS:



TECHNICAL SPECIFICATIONS:

205W

SETTING	SYSTEM WATTS	4000K (80CRI)		5000K (80CRI)	
		LUMENS	LPW	LUMENS	LPW
100%	205W	30500lm	149 lm/W	30500lm	149 lm/W
80%	164W	25000lm	152 lm/W	25000lm	152 lm/W
60%	123W	19500lm	159 lm/W	19500lm	159 lm/W
40%	82W	14000lm	171 lm/W	14000lm	171 lm/W

300W

SETTING	SYSTEM WATTS	4000K (80CRI)		5000K (80CRI)	
		LUMENS	LPW	LUMENS	LPW
100%	300W	42000lm	140 lm/W	42000lm	140 lm/W
80%	240W	36000lm	150 lm/W	36000lm	150 lm/W
60%	180W	28000lm	156 lm/W	28000lm	156 lm/W
40%	120W	20000lm	167 lm/W	20000lm	167 lm/W

410W

SETTING	SYSTEM WATTS	4000K (80CRI)		5000K (80CRI)	
		LUMENS	LPW	LUMENS	LPW
100%	410W	60600lm	148 lm/W	60600lm	148 lm/W
80%	328W	50000lm	152 lm/W	50000lm	152 lm/W
60%	246W	38400lm	156 lm/W	38400lm	156 lm/W
40%	164W	28000lm	171 lm/W	28000lm	171 lm/W

CCT SELECT

4000K 5000K

Offer two CCT adjustable (4000K, 5000K).

WATTAGE SELECT


40% 60% 80% 100%

Each model supports 4 positions wattage regulation: 100%, 80%, 60%, 40%

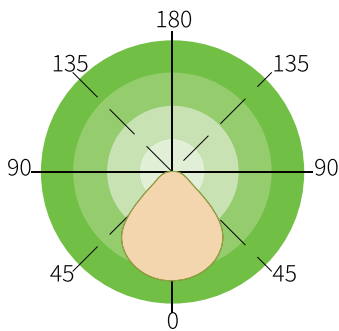
CCT AND WATTAGE SELECTABLE

This fixture has the function of adjusting the lumens output and color temperature on-site.

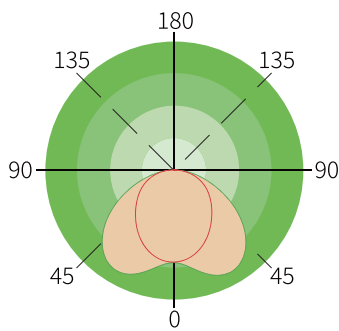
ACCESSORIES (OPTIONAL)

			
<p>Emergency Battery 8W 900lm 90min, suit for 130W (Sold separately)</p>	<p>Emergency Battery 15W 2000lm 90min, suit for 160W, 205W (Sold separately)</p>	<p>Emergency Battery 25W 3500lm 90min, suit for 250W, 300W, 410W (Sold separately)</p>	<p>Emergency Battery 30W, 4000lm, 90min, suite for 347-480V input voltage (Sold separately)</p>
			
<p>Plug-and-Play PIR Sensor 12-24VDC PIR sensor: MSANT12VPH01 Bluetooth PIR sensor: MSANT12VPHB01 (Sold separately)</p>	<p>Plug-and-Play Microwave Sensor 12-24VDC Microwave sensor: MSANT12VMH01 Bluetooth microwave sensor: MSANT12VMHB01 (Sold separately)</p>	<p>Steel Wire Rope(Default) USE: Chain mounting.</p>	<p>Wire Guards (Sold separately)</p>

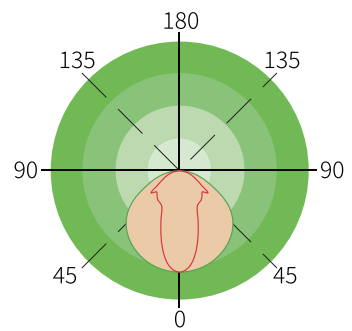
PHOTOMETRICS:



General



Aisle Optic

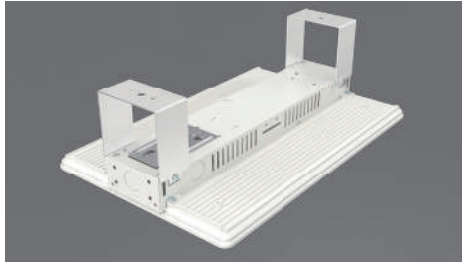


Narrow

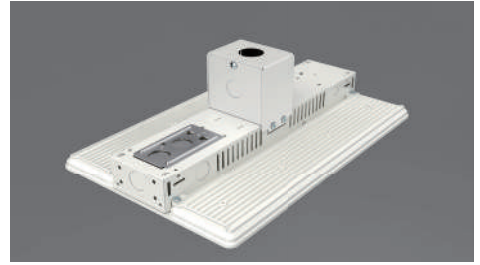
MOUNTING:



Mounting With Steel Wire Rope



Surface Mounting



Conduit Pendant Mount

ORDERING GUIDE		NUR-LHB-205W-CCT
Fixture <input type="text" value="NUR-LHB"/>	Wattage <input type="text"/>	Color Temperature <input type="text" value="CCT"/>
	205W 300W 410W	