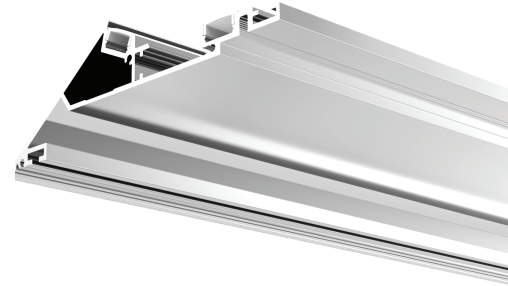


DOUBLE COVE ALUMINUM CHANNEL

DESCRIPTION:

The Double Cove Aluminum Channel offers a premium lighting solution that combines functionality with aesthetic appeal. Designed specifically for the installation of LED lights, this channel not only protects against damage, moisture, and heat dissipation but also enhances the surrounding environment by providing soft, ambient illumination. Its white powder-coated finish contributes to a sleek, modern look, making it ideal for indirect ceiling cove lighting.



FEATURES:

- High-Quality Material: Made from durable 6065-T5 aluminum.
- Versatile: Fits LED strips up to 0.47 inch wide.
- Wide Beam Angle: Provides a 100-degree beam angle for broad light coverage.
- Lightweight: Weighs only 1.12 lbs/ft, making it easy to install.

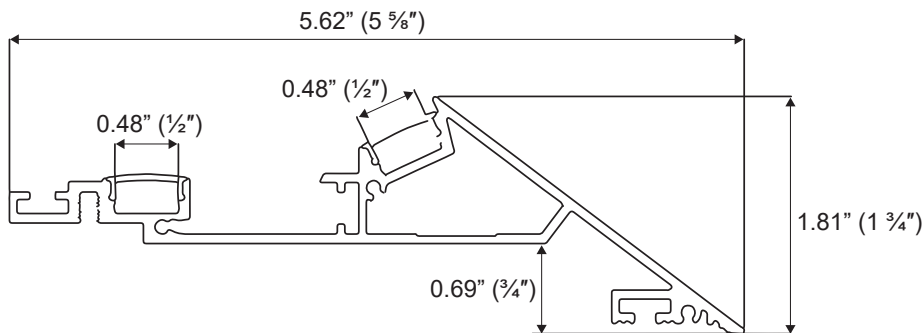
APPLICATIONS:

- Cove Lighting
- Indirect Lighting
- Accent Lighting

TECHNICAL SPECIFICATIONS:

Material	6065-T5 aluminum
Finish	Matte white powder coating
Cover	PC diffused cover
Length	6.56 ft.
Weight	1.12 lbs/ft
Max LED Strip Width	0.47 inches
Max Power Capacity	40W
Beam Angle	100°
Installation	Surface-mounted cove lighting

DIMENSIONS:



ACCESSORIES (SOLD SEPARATELY):



End Cap With Hole(Aluminum)



End Cap Without Hole(Aluminum)

End Caps
SKU: AE-090-CAP



180° Connector(Metal)
SKU: AE-CONN-180°



90° Connector(Metal)
SKU: AE-CONN-90°



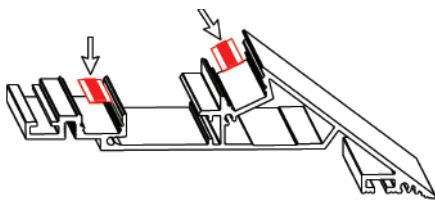
90° Vertical Connector (Metal)
SKU: AE-CONN-V-90°



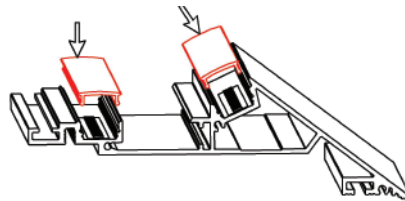
Cover
SKU: AE-090-CVR-2M

STEPS OF INSTALLATION:

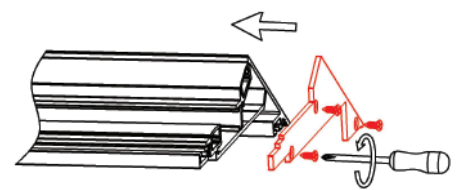
1. Stick the LED strip



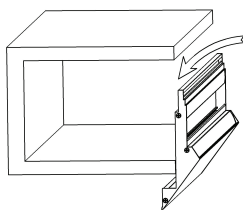
2. Press the diffused cover



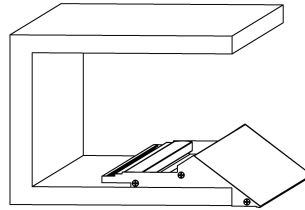
3. Lock the end caps



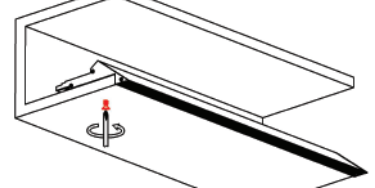
4. Insert the fixture to position



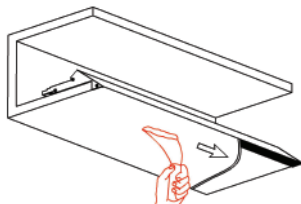
5. Already in place



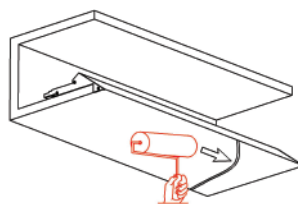
6. Fix the fixture to the drywall with screw



7. Plaster on the fixture & drywall



8. Painting on the fixture & drywall



9. Installation completed

