

# 6" 5-CCT DOWNLIGHT (2 PACK)

## DESCRIPTION:

This 6" CCT Recessed Downlight offers adjustable color temperatures of 2700K, 3000K, 3500K, 4000K, or 5000K for optimal lighting. It operates at 120V, is dimmable, and features a durable polycarbonate driver housing with an aluminum reflector in an architectural white finish, allowing for easy installation in existing housings. Rated for damp locations, it suits residential and commercial settings.



## FEATURES:

- **Durable Construction:** Made of high-quality aluminum and plastic for long-lasting performance.
- **Color Temperature Adjustable:** Choose from 2700K, 3000K, 3500K, 4000K, and 5000K to match your lighting preferences.
- **Dimmable:** Compatible with most standard dimmer switches for personalized lighting control.
- **Stylish Trim Options:** Available in bronze, black, and nickel finishes (sold separately) to complement your decor.
- **Easy Installation:** Quick Connect with E26 base adapter for easy installation and wiring.
- **Long Lifespan:** Provides 50,000 hours of reliable lighting.
- **5-Year Warranty:** Includes a 5-year warranty.

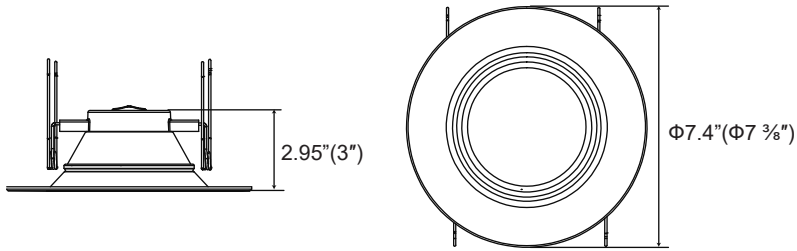


## APPLICATIONS:

- Kitchens
- Dining Rooms
- Hallways
- Living Rooms
- Offices

## TECHNICAL SPECIFICATIONS:

Watts (W)	15W
Size	6"
Voltage	120V
Power Factor	>0.9
Lumen Output	969lm (2700K), 1035lm (3000K), 1110lm(3500K), 1158lm(4000K), 1093lm(5000K)
Color Temperature	5CCT Switchable 2700K/3000K/3500K/4000K/5000K
Energy saving	80% more than halogen bulbs
Base	E26
Beam Angle	100°
Dimmable	Triac Dimming
Replaces	85W incandescent 120W halogen
Dimensions	7.36in. x 7.36in. x 3.91in.
Working Temperature	-4°F~122°F
CRI	90
Rating	Suitable for Damp Locations
Lifespan	>50,000 hrs
Warranty	5-years

**DIMENSIONS:****IMPORTANT SAFETY INFORMATION:**

Before beginning assembly, installation, or operation of this product, please read and understand this entire manual. Failure to follow these instructions may result in a risk of fire or electric shock. Installation of this retrofit kit should be performed only by individuals familiar with the luminaire's electrical system and associated hazards. If not qualified, contact a licensed electrician.

**WARNINGS:**

- Risk of fire or electric shock. This kit should only be installed in luminaires with the specified construction features and dimensions, as shown in the accompanying diagrams. The retrofit kit's input rating must not exceed the luminaire's input rating.
- Avoid wiring damage or abrasion by preventing exposure to sharp edges of sheet metal or other objects.
- Regulatory Compliance: This retrofit kit is accepted as part of a luminaire, where the combination's suitability is determined by relevant authorities. A qualified electrician must install it in accordance with all applicable electrical codes. This guide does not replace local or national electrical installation regulations.
- Drilling Caution: Only specified open holes may be made or altered per installation diagrams, and no additional open holes should be left in wiring or electrical enclosures. Exercise caution when drilling to avoid damaging luminaire wiring, power supply, or other components.
- Not for Emergency Exits: This device is not designed for use with emergency exits.
- Environmental Suitability: Suitable for damp locations.

**BEFORE INSTALLATION:**

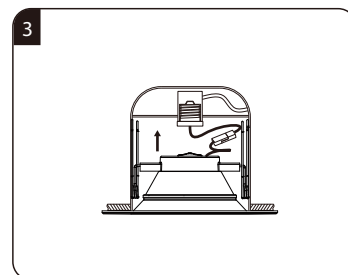
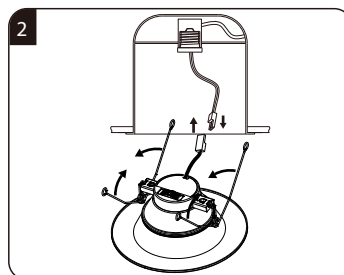
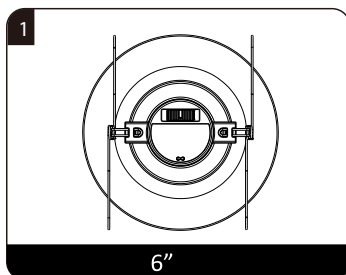
- Ensure the power is turned off at the fuse box.

**INSTALLATION GUIDE:****TURN OFF POWER AT FUSE BOX BEFORE INSTALLING:**

STEP 1: Screw the E26 socket adapter into the existing socket.

STEP 2: Connect the terminals from E26 socket adapter to the fixture.

STEP 3: Press spring clips together, push fixture up into can and release once in, continue pushing until flush with ceiling.



### REMOVING LED LUMINAIRE:

1. Trim Ring Release: Gently pull down on the trim ring until the fixture stops.
2. Fixture Detachment: Squeeze the torsion springs together and carefully remove the LED fixture.
3. Electrical Disconnection: Disconnect the fixture from the E26 socket adapter
4. Adapter Removal: Unscrew the E26 socket adapter from the recessed can.

**Note:** Ensure the power is switched off before attempting any maintenance or removal procedures.

### TRIMS (SOLD SEPARATELY):

Our 6-inch trim is compatible with our 6" CCT Downlights, offering an easy way to enhance your lighting setup. Available in three stylish finishes-Black, Brushed Nickel, and Bronze-this trim allows you to customize the look of your downlights to match your decor. Each trim is sold individually, giving you the flexibility to mix and match colors for a personalized lighting solution.

- Designed for use with our 6" CCT Downlights
- Available finishes: Black, Brushed Nickel, and Bronze
- Sold individually for mix-and-match customization



SKU: DWN-TRIM-6-BK



SKU: DWN-TRIM-6-BN



SKU: DWN-TRIM-6-BZ