

4" CCT RECESSED DOWNLIGHT (2-PACK)

DESCRIPTION:

This 4" CCT Recessed Downlight offers adjustable color temperatures of 2700K, 3000K, 3500K, 4000K, or 5000K for optimal lighting. It operates at 120V, is dimmable, and features a durable polycarbonate driver housing with an aluminum reflector in an architectural white finish, allowing for easy installation in existing housings. Rated for damp locations, it suits residential and commercial settings.



FEATURES:

- Customizable Color Temperature Selection: 2700K, 3000K, 3500K, 4000K, or 5000K.
- Sleek White Finish: Polycarbonate driver housing with aluminum reflector.
- Simple Installation: Easy clip-in design.
- Even, Shadowless Lighting: Uniform illumination without halo or shadows.
- Dimmable Capability: Compatible with most Triac dimmers (100%-5%).
- Baffle or Smooth Finish Options: Choose the desired aesthetic.
- Removable Trim Options: Brushed Nickel, Black, and Bronze (sold separately) with baffle or smooth trim styles.

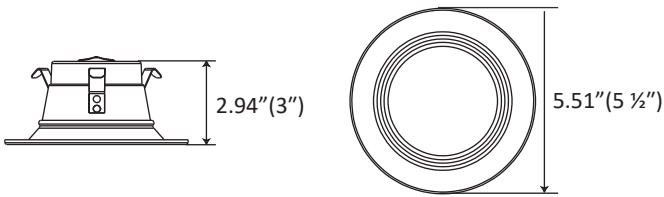


APPLICATIONS:

- Residential Spaces
- Hospitality
- Retail and Commercial Spaces
- Educational Facilities
- Decorative Installations

TECHNICAL SPECIFICATIONS:

Voltage	120V
Power Frequency	60Hz
Power Factor	>0.9
Color Temperature	5CCT (2700K, 3000K, 3500K, 4000K, 5000K)
Lumens	670lm, 707lm, 736lm, 752lm, 744lm
Beam Angle	100°
Material	Polycarbonate (PC) + Aluminum (AL)
Lifespan	≥50,000 hours
Operating Temp	-4°F to 113°F
Dimmable	Triac Dimming
Rating	Suitable for Damp Locations
CRI	90
Warranty	5 Year

DIMENSIONS:**IMPORTANT SAFETY INFORMATION:**

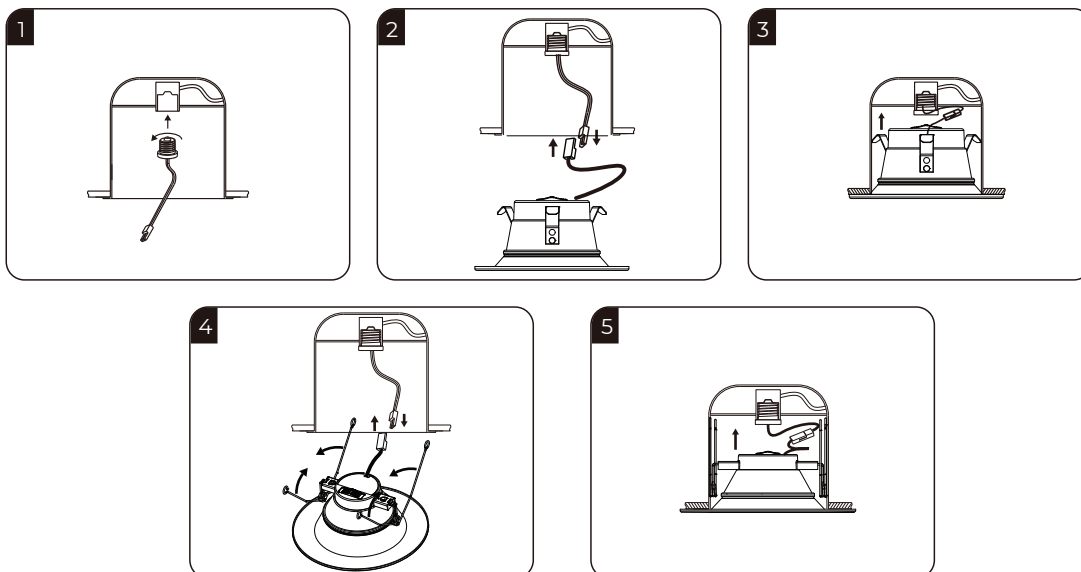
Before beginning assembly, installation, or operation of this product, please read and understand this entire manual. Failure to follow these instructions may result in a risk of fire or electric shock. Installation of this retrofit kit should be performed only by individuals familiar with the luminaire's electrical system and associated hazards. If not qualified, contact a licensed electrician.

WARNINGS:

- Risk of fire or electric shock. This kit should only be installed in luminaires with the specified construction features and dimensions, as shown in the accompanying diagrams. The retrofit kit's input rating must not exceed the luminaire's input rating.
- Avoid wiring damage or abrasion by preventing exposure to sharp edges of sheet metal or other objects.
- This retrofit kit is accepted as part of a luminaire where the combination's suitability is determined by relevant authorities. A qualified electrician must install it in accordance with all applicable electrical codes. This guide does not replace local or national electrical installation regulations.
- Risk of fire or electric shock. Exercise caution when drilling to avoid damaging luminaire wiring, power supply, or other components. Only specified open holes may be made or altered per installation diagrams, and no additional open holes should be left in wiring or electrical enclosures.
- This device is not designed for use with emergency exits.
- Suitable for damp locations.

BEFORE INSTALLATION:

- Ensure the power is turned off at the fuse box.

INSTALLATION GUIDE:

1. Turn Off Power: Switch off power at the electrical panel.
2. Install E26 Socket Adapter: Screw the E26 socket adapter into the existing socket (see Fig. 1).
3. Connect Terminals: Attach the terminals from the E26 socket adapter to the fixture (see Fig. 2, Fig. 5).
4. Install Fixture in Ceiling (4" Retrofit): Push the fixture into the can, ensuring it sits flush with the ceiling (see Fig. 3).

REMOVING LED LUMINAIRE:

1. Trim Ring Release: Gently pull down on the trim ring until the fixture stops.
 2. Fixture Detachment: Squeeze the torsion springs together and carefully remove the LED fixture.
 3. Electrical Disconnection: Disconnect the fixture from the E26 socket adapter.
 4. Adapter Removal: Unscrew the E26 socket adapter from the recessed can.
- Note:** Ensure the power is switched off before attempting any maintenance or removal procedures.

TRIMS (SOLD SEPARATELY):

Our 4-inch trim is compatible with our 4" CCT Downlights, offering an easy way to enhance your lighting setup. Available in three stylish finishes—Black, Brushed Nickel, and Bronze—this trim allows you to customize the look of your downlights to match your decor. Each trim is sold individually, giving you the flexibility to mix and match colors for a personalized lighting solution.

- Designed for use with our 4" CCT Downlights
- Available finishes: Black, Brushed Nickel, and Bronze
- Sold individually for mix-and-match customization



SKU: DWN-TRIM-4-BK



SKU: DWN-TRIM-4-BN



SKU: DWN-TRIM-4-BZ