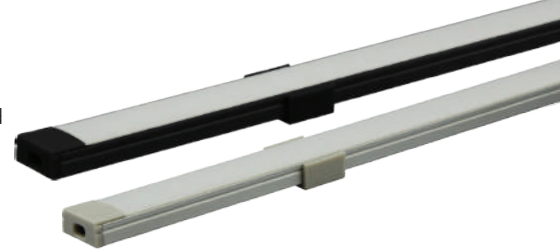


UNIVERSAL SLIM SHALLOW ALUMINUM CHANNEL

DESCRIPTION:

The Universal Slim Shallow Aluminum Channel offers a versatile solution for discreet lighting applications, suitable for LED strips up to 0.43 inches wide. Made from durable aluminum, it comes in Black and Aluminum finishes to suit different styles. Its sleek and shallow design allows for seamless integration into various settings, enhancing the ambiance while providing functionality.



FEATURES:

- Anodized Surface: Provides a durable and aesthetically pleasing finish.
- Waterproof LED Strip Compatibility: Accommodates waterproof LED strips.
- Cover Options: Black, clear, frosted, and milky covers available separately for uniform light diffusion.
- Mounting Options: Can be surface-mounted using clips or recessed into a routed channel in wood, or simply glued on.

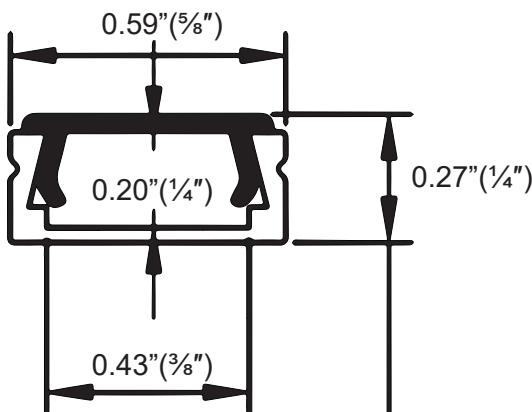
APPLICATIONS:

- Hanging/pendant/suspension type (ceiling)
- Recessed type (floor or ceiling)
- Surface type (floor, ceiling, cabinet, showcase etc)
- Stairs type (stairs, steps, showcase etc)
- Corners type (corners, contour, door side, furniture, wall sides etc)

TECHNICAL SPECIFICATIONS:

Material	Durable Aluminum 1060 alloy and PC
Compatible LED Strip Width	Up to 0.39in. (Optimal with 36.5 LEDs/ft to avoid light dots)
Surface Processing	Silver Anodization
Length Options	1m (3.2ft.) , 2m (6.4ft.)
Color Options	Black , Aluminum
PC Cover Options	Black, Clear, Frosted, Milky (sold separately)
IP Rating	IP20

DIMENSIONS:



ORDERING GUIDE:

SKU: AE-1506-Uni Slim-1M			
Model	Color	Type	Size
AE - 1506 (Aluminum Extrusion)	Black Aluminum	Uni Slim	1M 2M

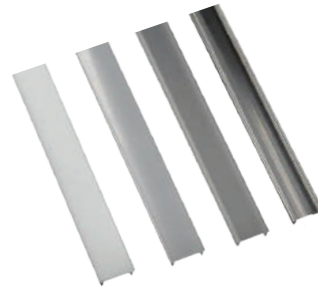
Note: Black finish is available only in the 1M length.

ACCESSORIES:


Plastic End Caps for Universal slim Aluminum Channel
SKU: AE-1506-CAP

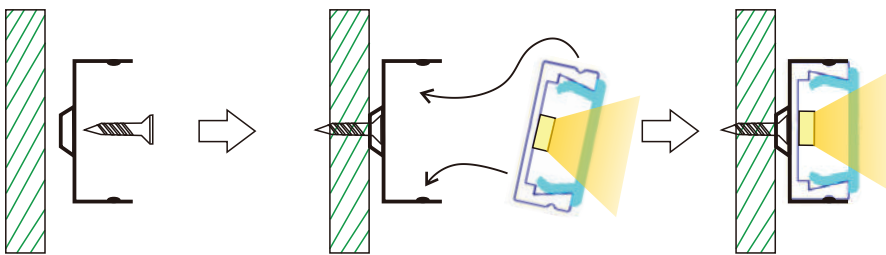


Aluminum Extrusions Mounting Bracket-Universal
SKU: AE-UNI-MNT



Universal Channel Covers
SKUs:

- AE-CVR-BK-UNI-FRS-1M
- AE-CVR-UNI-CLR-1M
- AE-CVR-UNI-FRS-1M
- AE-CVR-UNI-MLK-1M
- AE-CVR-UNI-CLR-2M
- AE-CVR-UNI-FRS-2M
- AE-CVR-UNI-MLK-2M

SERVICE ENVIRONMENT AND INSTALLATION:
1. Installation with clip

2. Installation with double-sided tap
