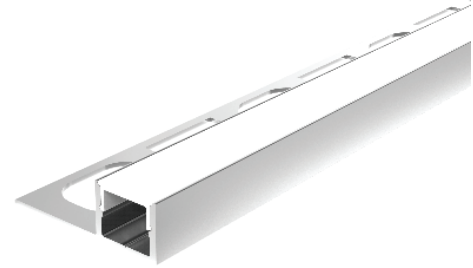


TILE EDGE RECESSED ALUMINUM CHANNEL

DESCRIPTION:

This Tile Edge Recessed Aluminum Channel is designed to be used with LED strip lights of 0.39 inches wide, providing a clean, smooth surface for LED strip lights to be adhered to. Made from high quality aluminum 6065-T5, it features a silver anodized surface for enhanced durability and appearance. This is ideal for smart home lighting and indoor lighting.



FEATURES:

- Seamless recessed lighting integration
- Efficient heat dissipation for extended LED lifespan
- Uniform light distribution with a diffused cover (sold separately)
- Trimless recessed installation for a clean finish

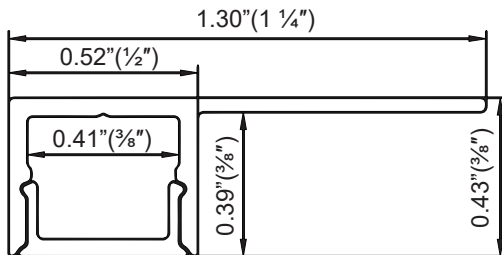
APPLICATIONS:

- Smart Home Lighting
- LED Strip Light Installations
- Bathroom and Kitchen Tiles
- Living Rooms
- Corridors

TECHNICAL SPECIFICATIONS:

Material	6065-T5 Aluminum Profile
Length	3.28ft. (1M) , 6.56ft. (2M)
Diffuser	PC diffused cover (sold separately)
Weight	0.131lbs/ft
Maximum LED Strip Width	0.39in.
Beam Angle	100°
Finish	Chrome , Black
Installation	Trimless recessed

DIMENSIONS:



ORDERING GUIDE:

SKU: AE-087-AP-REC-1M			
Model	Shape	Color	Size
AE-087-AP (Aluminum Extrusion-Aluminum Profile)	REC (Rectangle)	Chrome Black	1M 2M

ACCESSORIES:

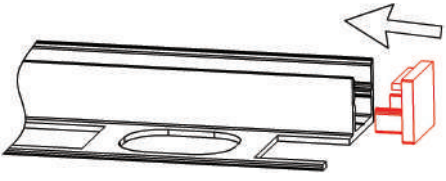
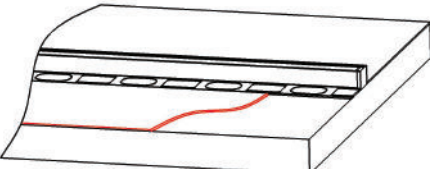
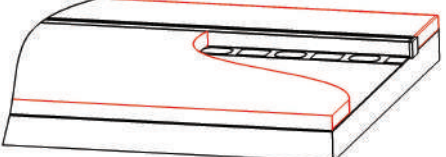
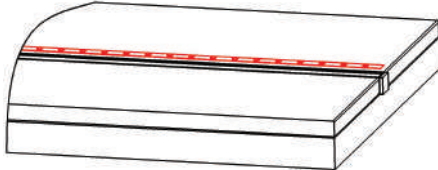
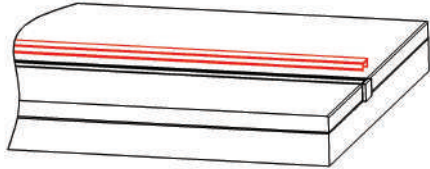


Tile Edge Recessed Aluminum Channel-End Caps
SKU: AE-087-CAP
AE-087-CAP-BLK



Tile Edge Recessed Aluminum Channel-Cover
SKU: AE-087/069/068-CVR-FRS-1M
AE-087/069/068-CVR-FRS-2M

STEPS OF INSTALLATION:

<p>1. Attach the LED strip.</p> 	<p>2. Apply the cement paste.</p> 	<p>3. Install the tile flooring.</p> 
<p>4. Secure the LED strip.</p> 	<p>5. Snap on the diffused cover.</p> 	<p>6. Installation completed</p> 