

# 3" 4" 6" ROUND LED ULTRA SLIM

## Description:

The ultra-thin recessed light is a 6-watt, 3-inch slim-profile lighting fixture designed for retrofitting recessed applications. It is an easy-to-install residential-grade downlight solution that provides good light output, energy efficiency, and a streamlined design. This light is suitable for use in damp locations.



## Features:

### All in One Power Supply + Junction Box

Included is an isolated power supply designed to power 3", 4" and 6" Round Ultra Slim Fixture. It has a high lumen efficiency of 6, 8 and 12 watts. The durable air tight body is made of aluminum and has 1/2" knockouts for easy connection to 120v AC. The output is a quick connector which plugs into the matching quick connector from the light. The enclosure opens up to allow for easy connections for the input wires. Inside you can also find a switch to adjust the LED CCT from 2700k to 5000k.

### LED Fixture

This light fixture is suitable for general lighting applications and fits into a 3", 4" and 6" hole. The tension springs all the light to hold it self into a sheetrock or in a drop ceiling tile. The light source illuminates an acrylic lens that provides uniform intensity and can produce up to 512 lumens in 3", 644 lumens in 4" and 1041 lumens in 6" . It has a typical (CRI) of 90 or higher. The fixture is available in a range of correlated color temperatures (CCT) from 2700K to 5000K.

### Dimming

This fixture has a dimming capability ranging from 5% to 100%. It is compatible with industry-standard TRIAC/ELV dimmers.

### Beam Angle

The fixture lens provides 120° beam angle.

### Quick Connect push-in terminals

Three "Quick connect" push-in terminals for fast and easy wiring.

### Operating Temperature

-20°C~40°C (-4°F~104°F).

### Environment

Suitable for damp locations.

Suitable for insulated ceiling applications.

### Lifespan

50,000 hours at 70% light output.



### Instruction:

There is a dip switch located on the front of the junction box that is marked with color temperature options of 2700K, 3000K, 3500K, 4000K, 5000K, and SW. This dip switch is also known as CCT selectable, allowing you to choose your preferred color temperature.

#### By dip switch

You can select a specific color temperature (2700K, 3000K, 3500K, 4000K, or 5000K) using the dip switch. Once the desired color temperature is selected, the light will emit that color.

#### By wall switch

To select the "SW" option on the dip switch, turn on the wall switch first. The light will emit at 2700K. To change the color temperature, turn the light off and on again within 2 seconds. The color temperature will change to 3000K, then 3500K, 4000K, and finally 5000K, before looping back to 2700K. If the light is off for longer than 6 to 8 seconds, it will retain the memory of the last color temperature selected when turned on again.



### Technical Specifications:

Size	3"	4"	6"
Wattage	6W	8W	12W
Total Size of Trim	Φ3.62"	Φ4.92"	Φ6.69"
Cutting Dimension	3"	4"	6"
Voltage	120V		
Power Frequency	60Hz		
Power Factor	>0.9		
CRI	80		
Beam Angle	120°		
Dimmable	Yes		
Operating Temperature	(-4°F~ 122°F)		
Lifespan	≥50,000 Hours		
IP Rating	Wet Location		
Warranty	5 years		

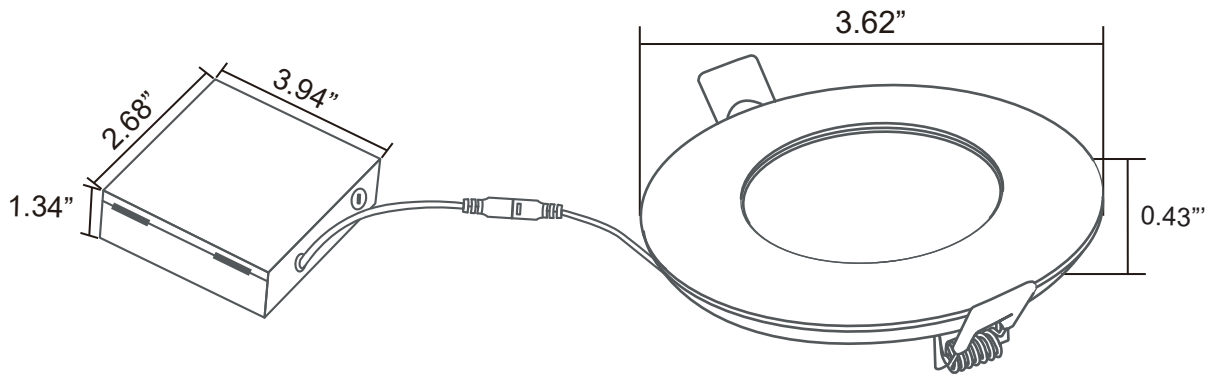
3" Round LED Ultra Slim	
CCT	Lumens
2700K	451 LM
3000K	500 LM
3500K	509 LM
4000K	512 LM
5000K	478 LM

4" Round LED Ultra Slim	
CCT	Lumens
2700K	562 LM
3000K	613 LM
3500K	637 LM
4000K	644 LM
5000K	602 LM

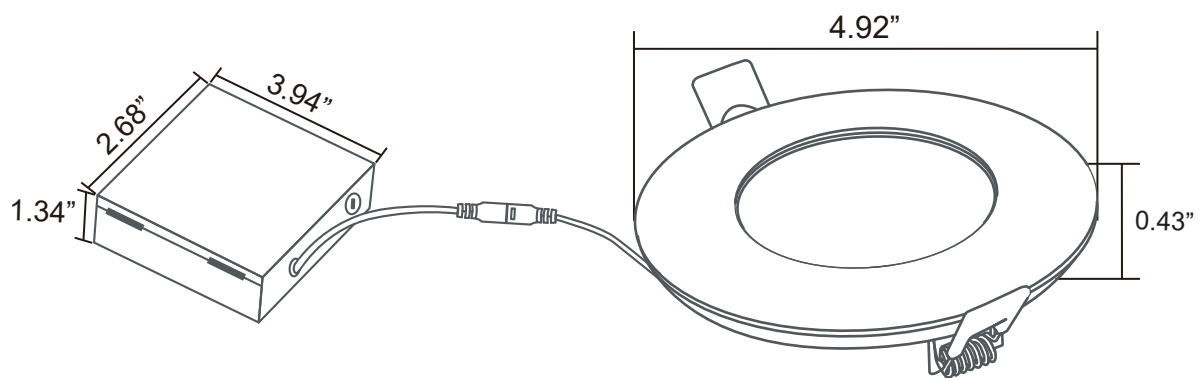
6" Round LED Ultra Slim	
CCT	Lumens
2700K	936 LM
3000K	996 LM
3500K	1038 LM
4000K	1041 LM
5000K	998 LM

### Dimensions:

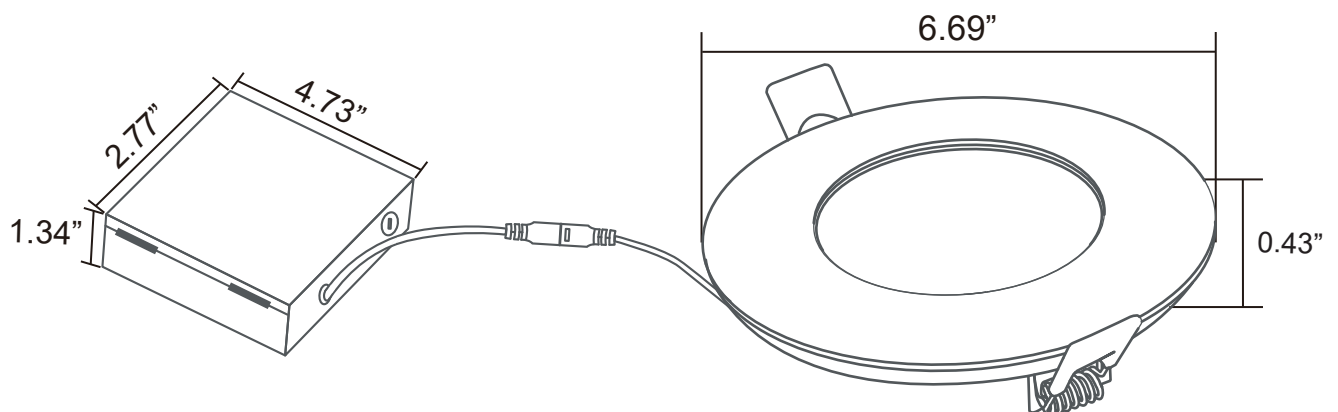
#### 3inch



#### 4inch

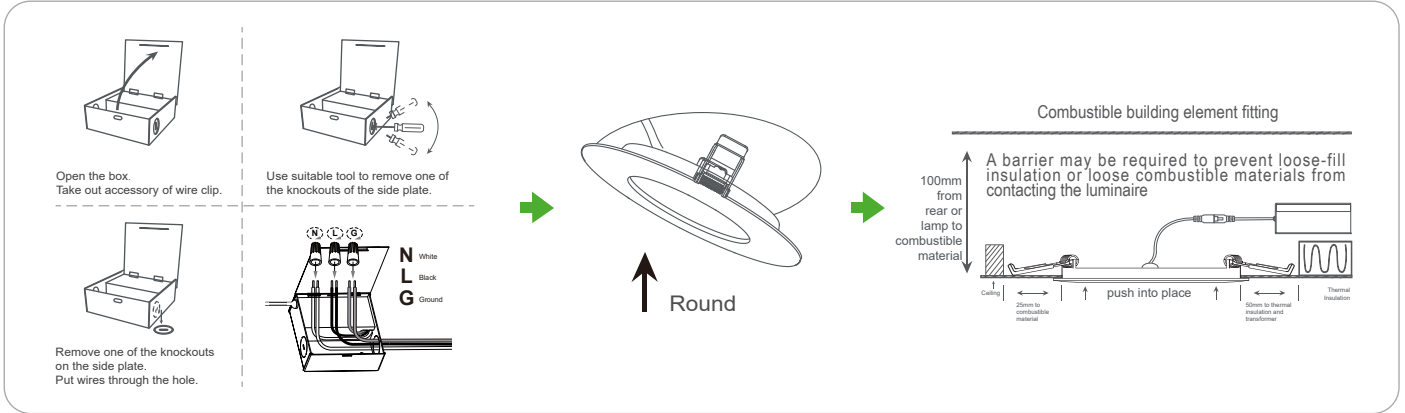


#### 6inch



**Installation:**

- To determine the appropriate hole size for installation, locate the template on the back of the box. Use the circle template to measure the required hole size, then cut out the holes accordingly.



**ORDERING GUIDE**

Example: NUR-SLR-JB-B-3-6W-5CCT

Slim Round Recessed Ceiling Light	Junction Box	Trim Size	Color Temperature
NUR-SLR	JB-B		5CCT
		3      3 inch 4      4 inch 6      6 inch	