

# CORNER QUARTER ROUND ALUMINUM CHANNEL

## DESCRIPTION:

The corner Quarter Round Aluminum channel is designed to fit LED strips of Width 0.39 inches. This channel offers superior heat conductivity, ensuring efficient performance of the LED lights. Its innovative design allows it to seamlessly fit into 90-degree corners and project the light at a 45-degree angle, making it perfect for improving functionality and aesthetics in different environments.

## FEATURES:

- Aluminum alloy acts as a heat sink
- Compatible with impact-resistant polycarbonate lenses (frosted or clear, sold separately)
- Anodized aluminum finish for enhanced durability

## APPLICATIONS:

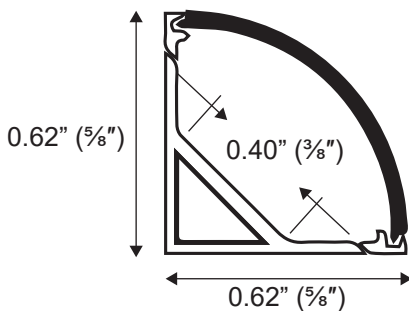
- Kitchens
- Cabinets
- Countertops
- Bathrooms
- Showrooms
- Wardrobes
- Bookcases
- Bars
- Display shelves



## TECHNICAL SPECIFICATIONS:

Material	Aluminum 1060 & Polycarbonate (PC)
Compatible LED Strip Width	Up to 0.39in. (optimal with 36 LEDs/ft to avoid spotting)
Surface Finish	Silver Anodization
Length Options	3.2ft, 6.4ft
Color Options	Black, Silver
Dimensions	0.62" x 0.62" x 0.40"
IP Rating	IP20

## DIMENSIONS:



**ORDERING GUIDE:**

SKU: AE-1616-Quarter Round-1M			
Model	Color	Type	Size
AE - 1616 (Aluminum Extrusion)	Silver Black	Quarter Round	3.2ft. 6.4ft.

**Note: Black finish is available only in the 6.4ft. length.**

**ACCESSORIES:**



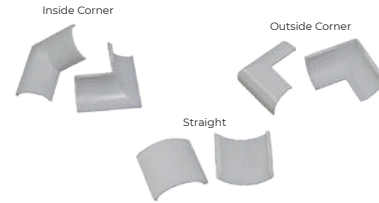
Metal Bracket for quarter round corner channel  
SKU: AE-1616(PC)-MNT  
AE-1616-MNT



Corner Quarter Round Channel End Cap  
SKU: AE-1616-CAP



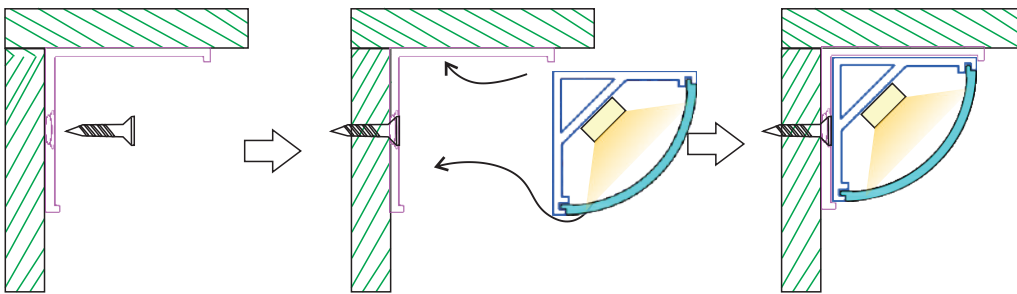
Corner Quarter Round Channel Cover  
SKU: AE-1616-CVR-CLR-1M  
AE-1616-CVR-FRS-1M  
AE-1616-CVR-CLR-2M  
AE-1616-CVR-FRS-2M



Aluminum Extrusions Connectors-Quarter Round 1616  
SKU: AE-1616-CONN-STR  
AE-1616-CONN-COR-IS  
AE-1616-CONN-COR-OS

**SERVICE ENVIRONMENT AND INSTALLATION:**

1. Installation with clip



2. Move along the wall in multiple directions, supporting both straight and L-shaped connections.

