

TALL STEP RECESSED ALUMINUM CHANNEL

DESCRIPTION:

The Tall Step Recessed Aluminum Channel is a premium solution for modern LED lighting installations. Crafted from high-quality 6065-T5 aluminum with a matte white powder-coated finish, this channel offers durability and a sleek appearance. Its diffused polycarbonate cover ensures even light distribution, creating a soft, ambient glow.



FEATURES:

- High-Quality Material: Made from 6065-T5 aluminum for strength and durability.
- Elegant Finish: Matte white powder coating for a sleek, modern look.
- Diffused Light: Polycarbonate cover provides even light distribution and reduces glare.
- Wide Beam Angle: 100-degree beam angle for broad light coverage.
- Recessed Installation: Designed for seamless integration into various architectural spaces.

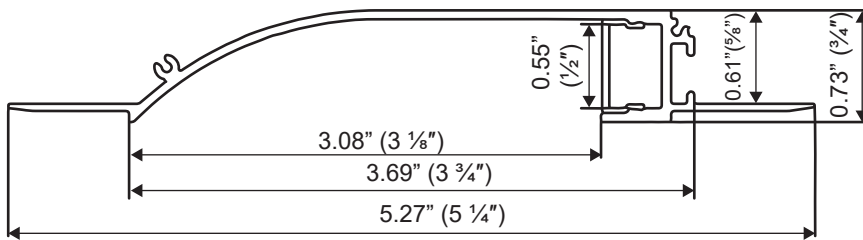
APPLICATIONS:

- Residential Spaces
- Commercial Spaces
- Architectural Lighting

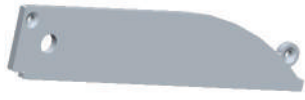
TECHNICAL SPECIFICATIONS:

Material	6065-T5 aluminum
Finish	Matte white powder coating
Cover	Diffused polycarbonate (PC)
Length	6.56 feet
Weight	1.70 lbs
Max LED Strip Width	0.47 inches
Max Power Capacity	25W
Beam Angle	100°
Installation	Recessed

DIMENSIONS:



ACCESSORIES (SOLD SEPARATELY):



End Cap With Hole(Aluminum)



End Cap Without Hole(Aluminum)

End Caps
SKU: AE-086-CAP



180° Connector(Metal)
SKU: AE-CONN-180°



90° Connector(Metal)
SKU: AE-CONN-90°



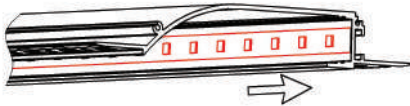
90° Vertical Connector (Metal)
SKU: AE-CONN-V-90°



Cover
SKU: AE-082/086-CVR-FRS-2M

STEPS OF INSTALLATION:

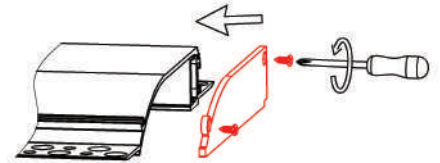
1. Stick the LED strip



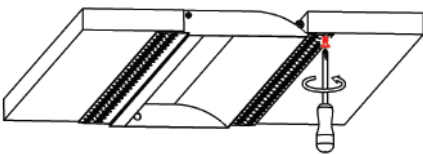
2. Press the diffused cover



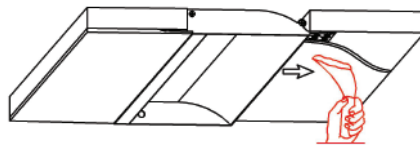
3. Lock the end caps



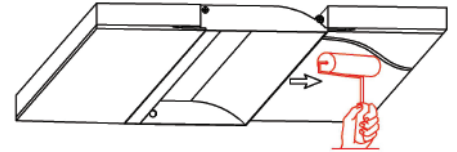
4. Mounting the fixture



5. Plaster on the fixture and dry wall



6. Painting on the fixture and dry wall



7. Installation completed

