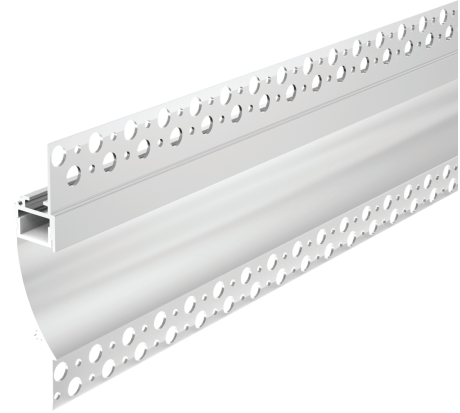


SHORT STEP RECESSED ALUMINUM CHANNEL

DESCRIPTION:

The Short Step Recessed Aluminum Channel is a sleek and modern lighting solution designed for seamless LED integration. Its trimless recessed installation ensures a clean and unobtrusive look, making it perfect for both residential and commercial applications.



FEATURES:

- Durable Construction: Made from high-grade 6065-T5 aluminum.
- Even Light Distribution: Comes with a PC diffused cover.
- Sleek Finish: Matte white powder coating.
- Versatile: Accommodates LED strips up to 0.47in. wide.
- Wide Beam Angle: 100-degree beam angle for broad illumination.

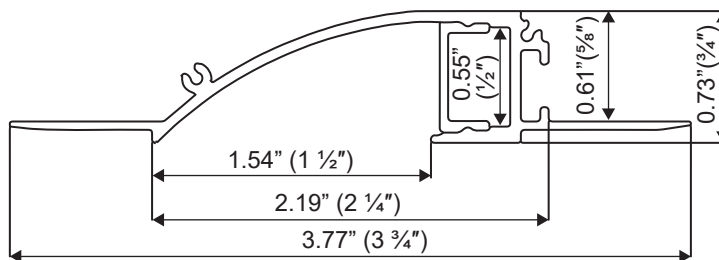
APPLICATIONS:

- Residential Spaces
- Commercial Spaces
- Architectural Lighting

TECHNICAL SPECIFICATIONS:

Material	Aluminum Profile 6065-T5
Finish	Matte white powder coating
Cover	PC diffused cover
Length	6.56 ft
Weight	1.36 lbs
Max LED Strip Width	0.47 inches
Max Power Capacity	20W
Beam Angle	100°
Installation	Trimless recessed

DIMENSIONS:



ACCESSORIES (SOLD SEPARATELY):



End Cap With Hole(Aluminum)



End Cap Without Hole(Aluminum)

End Caps
SKU: AE-082-CAP



180° Connector(Metal)
SKU: AE-CONN-180°



90° Connector(Metal)
SKU: AE-CONN-90°



90° Vertical Connector (Metal)
SKU: AE-CONN-V-90°



Cover
SKU: AE-082/086-CVR-FRS-2M

STEPS OF INSTALLATION:

<p>1. Stick the LED strip</p>	<p>2. Press the diffused cover</p>	<p>3. Fix the end caps</p>
<p>4. Mounting the fixture</p>	<p>5. Plaster on the fixture and dry wall</p>	<p>6. Painting on the fixture and dry wall</p>
<p>7. Installation completed</p>		