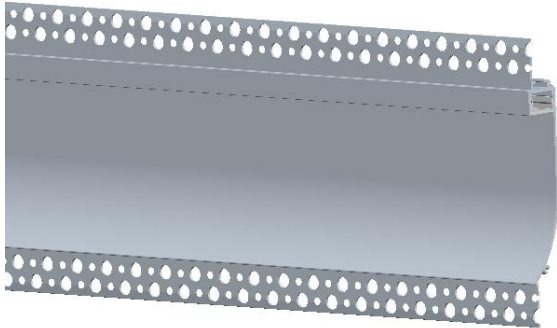
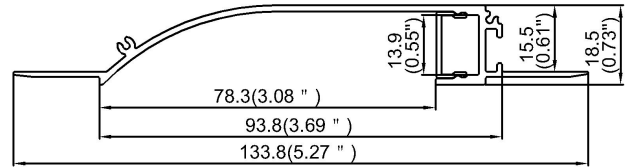


Model : ALP086



Dimension



Specification

Aluminum Profile	6065-T5
Diffuser	PC diffused cover
Length	2000mm
Weight	0.773kg/m
Max LED Strip Width	12mm
Beam angle	100°
Finish	Matte white powder coating
Installation	Recessed

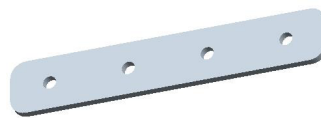
Accessories



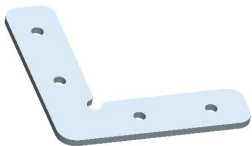
End Cap With Hole(Aluminum)



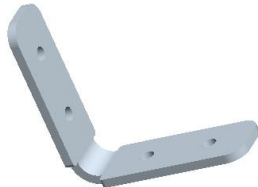
End Cap Without Hole(Aluminum)



180° Connector(Metal)



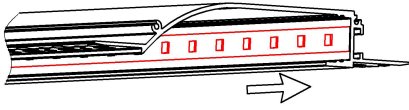
90° Connector(Metal)



90° Vertical Connector(Metal)

Steps of Installation

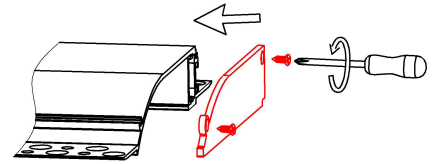
1. Stick the LED strip



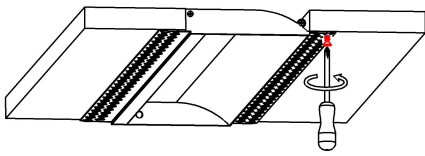
2. Press the diffused cover



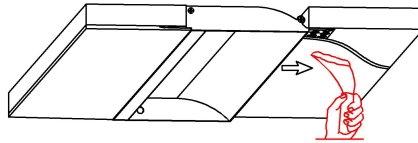
3. Lock the end caps



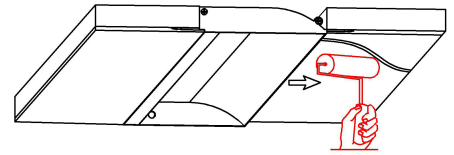
4. Mounting the fixture



5. Plaster on the fixture & drywall



6. Painting on the fixture & drywall



7. Installation completed

