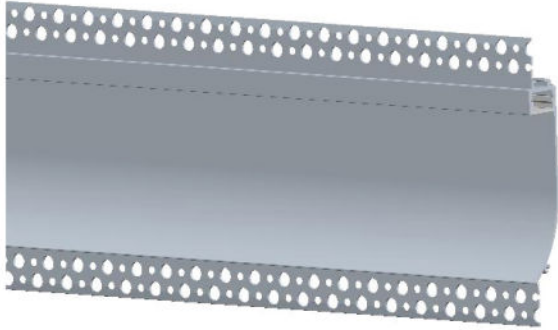


Aluminum Extrusions Recessed-082



Specification

Aluminum Profile	6065-T5
Diffuser	PC diffused cover
Length	6.4ft
Weight	1.36lbs
Max LED Strip Width	0.47in.
Beam angle	100°
Finish	Matte white powder coating
Installation	Recessed

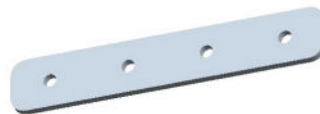
Accessories



End Cap With Hole(Aluminum)



End Cap Without Hole(Aluminum)



180° Connector(Metal)



90° Connector(Metal)

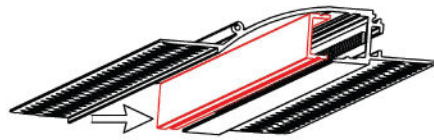


90° Vertical Connector(Metal)

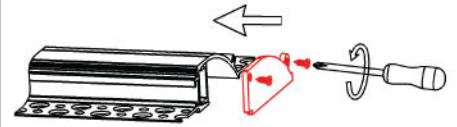
1. Stick the LED strip



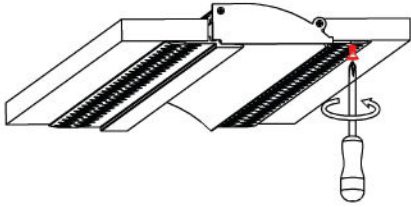
2. Press the diffused cover



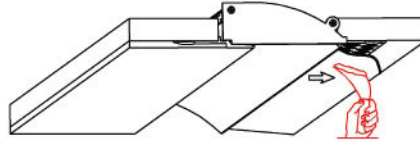
3. Fix the end caps



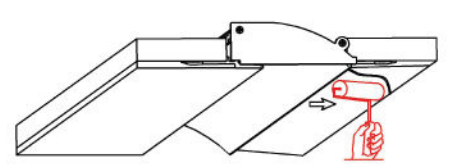
4. Mounting the fixture



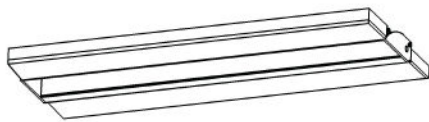
5. Plaster on the fixture & drywall



6. Paint fixture & drywall



7. Installation completed



Dimensions:

