

Product Features

- 6" Can suitable and 26watt CFL equivalent
- 80+ CRI
- High power factor > 0.9
- L70 life 50,000hours
- Rotatable 180°(Horizontal model)
- Die casting Aluminum heat sink
- Operating Temperature -4°F to 105°F
- UL damp listed
- Not use for totally enclosed fixtures
- The unites are intended to retrofit Type IC or non-IC recessed mount listed luminaires
- 5 years limited warranty
- Universal G24q 4-pin base can retrofits G24q-1,G24q-2,G24q-3,GX24q-1,GX24q-2 and GX24q-3.
- Safety Feature:** Built-in Thermal Detector support lamp cut off the power from over driven of incompatible electrical ballast.



Instruction

Hybrid Drive LED PL retrofit lamps are both electrical ballast and 120-277V line voltage compatible. They will be replacement for CFL bulbs in variety existing lamp intallation of commercial applications.

Ordering Number Logic

Model Number	Power (lamp only)	Lumen Output @277V	Base	Version	CCT	Voltage	Suitable Location	Beam Angle	Control
G24-12W-3000K-H	12W Max	900 Lm	G24Q	Horizontal	3000K	120-277VAC 50/60Hz or Driven by CFL Ballast	Dry and Damp	140°	Non-Dimming
G24-12W-5000K-H		1100Lm			5000K				

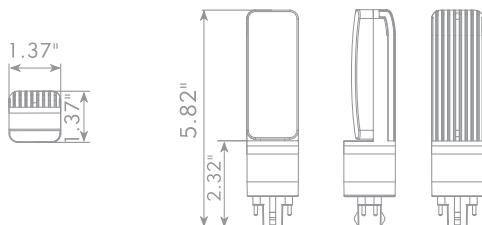
Application Notes:

This instant fit is suitable for operation with ballasts from the following manufacturers: Triad/Universal Lighting Technologies/ Hatch Lighting/OSRAM Sylvania/Philips Advance/ Energy Savings

Please find specific ballast models as attached table.

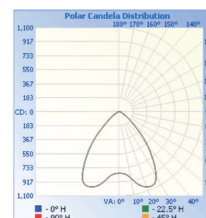
Base option

Unit:inch



Lighting Distribution

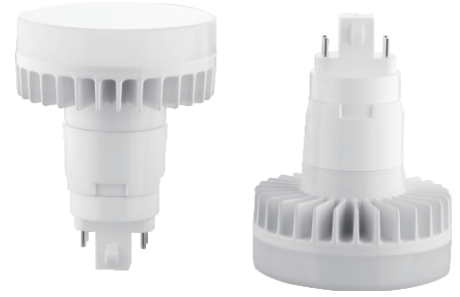
Dual Horizontal Lamps



Fixture: Lithonia 6HF 2/18DTT MVOLT

Product Features

- 6" Can suitable and 26watt CFL equivalent
- 80+ CRI
- High power factor >0.9
- L70 life 50,000hours
- Rotatable 180°(Horizontal model)
- Die casting Aluminum heat sink
- Operating Temperature -4°F to 105°F
- UL damp listed
- Not use for totally enclosed fixtures
- The unites are intended to retrofit Type IC or non-IC recessed mount listed luminaires
- 5 years limited warranty
- Universal G24q 4-pin base can retrofits G24q-1,G24q-2,G24q-3,GX24q-1,GX24q-2 and GX24q-3.
- Safety Feature:** Built-in Thermal Detector support lamp cut off the power from over driven of incompatible electrical ballast.



Instruction:

HybridDrive LED PL retrofit lamps are both electrical ballast and 120-277V line voltage compatible. 12 Watt LED PL Vertical retrofit lamp G24q base will be replacment for CFL bulbs in a variety existing lamp installations of commercial applications.

Ordering Number Logic

Model Number	Power (lamp only)	Lumen Output @277V	Base	Version	CCT	Voltage	Suitable Location	Beam Angle	Control
G24-12W-3000K-V	12W Max	900 Lm	G24Q	Vertical	3000K	120-277VAC 50/60Hz or Driven by CFL Ballast	Dry and Damp	140°	Non-Dimming
G24-12W-5000K-V		1100Lm			5000K				

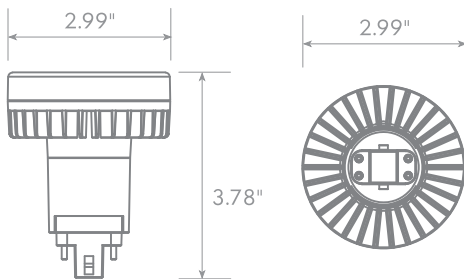
Application Notes:

This instant fit is suitable for operation with ballasts from the following manufacturers: Triad/Universal Lighting Technologies/ Hatch Lighting/OSRAM Sylvania/Philips Advance/ Energy Savings

Please find specific ballast models as attached table.

Base option

Unit:inch



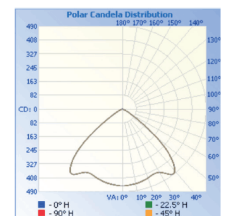
Accessories--Extension Adapter

Use for narrow long neck Lithonia Can



Lighting Distribution

Single Vertical Lamp



Fixture: Lithonia 6VF 18DDT/TRT MVOLT

Ballast List

Vealite Type A + B PLC is suitable for operation with ballasts from the following models:

Ballast Description			Compatibility Test Result			
Electrical Characteristic			1-Lamp		2-Lamp	
Brand	Model	Volt	120 VAC	277 VAC	120 VAC	277 VAC
LUMA PRO	16X954	120-277V	✓	×	✓	✓
LUMA PRO	4KGJ7	120-277V	✓	✓	✓	✓
LUMA PRO	4KGJ8	120-277V	✓	✓	✓	✓
LUMA PRO	16X959	120-277V	✓	✓	✓	✓
Universal/Triad	C213UNVME	120-277V	✓	✓	✓	✓
Universal/Triad	C218UNVME	120-277V	✓	✓	✓	✓
Universal/Triad	C242UNVME	120-277V	✓	×	✓	✓
Universal/Triad	C2642UNVME	120-277V	✓	✓	✓	✓
HOWARD INDUSTRIES	EP2/13CF/MV	120-277V	✓	✓	✓	✓
HOWARD INDUSTRIES	EP2/18CF/MV	120-277V	✓	✓	✓	✓
HOWARD INDUSTRIES	EP/2/26CF/MV/2	120-277V	✓	✓	✓	✓
GE	GEC218MVPSBES	120-277V	✓	✓	✓	✓
PHILIPS/ADVANCE	ICF-2S18-H1-LD	120-277V	✓	✓	✓	✓
PHILIPS/ADVANCE	ICF-2S26-H1-LD	120-277V	✓	✓	✓	✓
PHILIPS/ADVANCE	ICF-2S42-M2-LD	120-277V	✓	×	✓	✓
PHILIPS/ADVANCE	ICF-2S13-H1-LD	120-277V	✓	✓	✓	✓
ORSRAM/SYLVANIA	QTP1/2X18CF/UNVDM	120-277V	✓	✓	✓	✓
ORSRAM/SYLVANIA	QTP2X26CF/UNVDM	120-277V	✓	✓	✓	✓
ORSRAM/SYLVANIA	QTP1/2X13CF/UNVDM	120-277V	✓	✓	✓	✓
HATCH	HC226PS/UV/D	120-277V	✓	✓	✓	✓
CH	ACT2S26PSUNV	120-277V	✓	✓	✓	✓
STANDARD	31279STD	120-347V	✓	✓	✓	✓
STANDARD	31527STD	120-347V	×	✓	×	✓
KEYSTONE	KTEB-213-UV-PS-DW	120-277V	✓	✓	✓	✓
KEYSTONE	KTEB-218-UV-PS-DW	120-277V	✓	✓	✓	✓
KEYSTONE	KTEB-226-UV-PS-DW	120-277V	✓	✓	✓	✓
KEYSTONE	KTEB-218-UV-RS-DW	120-277V	✓	✓	✓	✓
FULHAM	RHAUNV226C	120-277V	×	×	×	✓
FULHAM	WH2120L	120-277V	✓	×	✓	×
FULHAM	WH2120C	120-277V	✓	×	✓	×
FULHAM	RHAUNV213C	120-277V	×	×	×	✓
FULHAM	RHA-UNV-218-C	120-277V	×	×	✓	✓
FULHAM	WH3-120-C	120-277V	✓	×	✓	×
FULHAM	WH2-277-L	120-277V	×	✓	×	×
FULHAM	WH3-277-L	120-277V	×	✓	×	✓
FULHAM	WH4-277-L	120-277V	×	✓	×	✓
FULHAM	RHA-UNV-242-C	120-277V	×	×	✓	✓

Remarks:

Manufacturer of LED Type A+B PL G24Q Lamps has a limitation of compatibility, not compatible with ALL ballasts, they were tested for compatibility with the above listed electronic ballasts. Ballasts that do not appear on the chart might still be compatible but have not been tested. It is a general recommendation to perform a test on-site before installing the LED lamps.