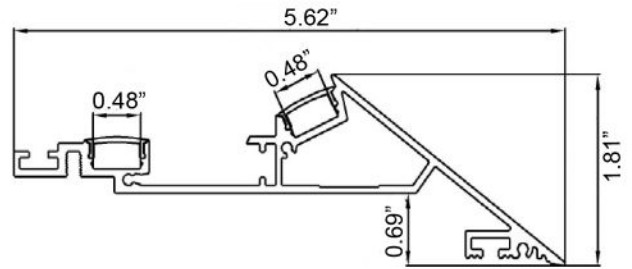


Model : ALP090



Dimension



Specification

Aluminum Profile	6065-T5
Diffuser	PC diffused cover
Length	6.4ft
Weight	3.66lbs
Max LED Strip Width	0.47in.
Beam angle	100°
Finish	Matte white powder coating
Installation	Surface cove lighting

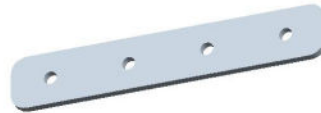
Accessories



End Cap With Hole(Aluminum)



End Cap Without Hole(Aluminum)



180° Connector(Metal)



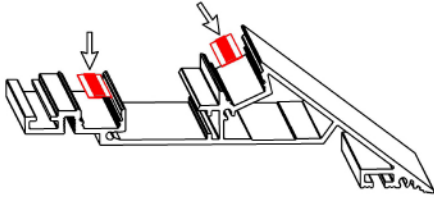
90° Connector(Metal)



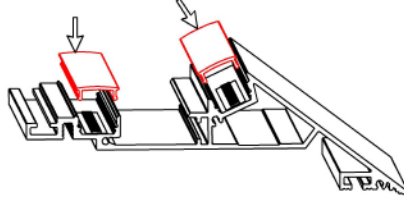
90° Vertical Connector(Metal)

Steps of Installation

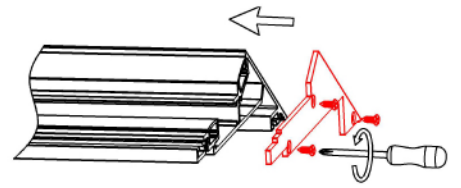
1. Stick the LED strip



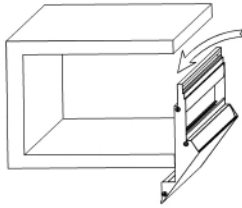
2. Press the diffused cover



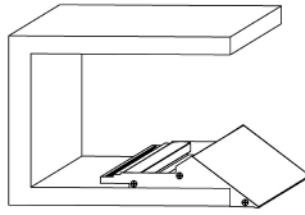
3. Lock the end caps



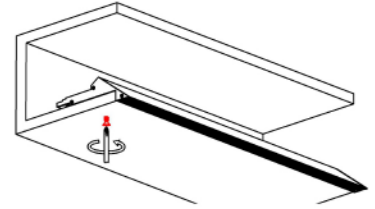
4. Insert the fixture to position



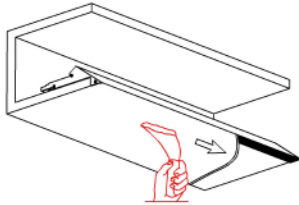
5. Already in place



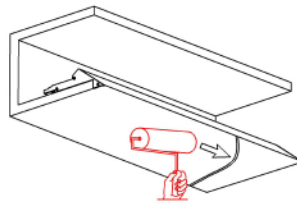
6. Fix the fixture to the drywall with screw



7. Plaster on the fixture & drywall



8. Painting on the fixture & drywall



9. Installation completed

