



## Features

- Input 12V or 24V DC
- 2.2W
- 80+ CRI
- Recessed or surface mounted
- Multiple colors of surface finish
- Uniform luminance

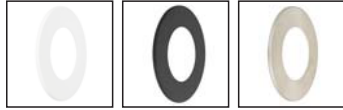
## Special Points

- Changeable trim ring with magnet
- 7mm thickness, slim structure



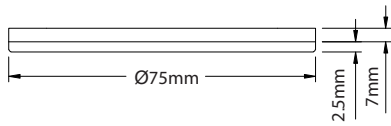
5 years warranty

## Changeable Trim Finish Color

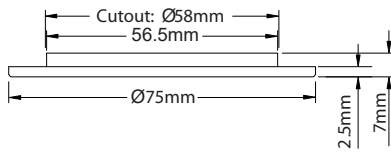


White      Black      Nickel

## Mechanical



Surface mounting



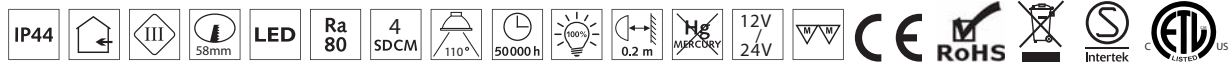
Recessed mounting

## General

Color Temperature(CCT)	2700K / 4000K / 6000K
Power Consumption(W)	2.2W
Input Voltage	12V or 24V DC
Light Source	0.1W SMD LED
Lumen	80lm/W
CRI (Ra)	80
Beam Angle	110°
Material	High quality heat conductive plastics
Fixture Color	
IP Grade	IP 44
Environment	Indoor use
Operation Temperature	Max Ta =45 °C
Lifespan	50 000hrs
Certification	CE, RoHS, S, ETL
Warranty	5 years

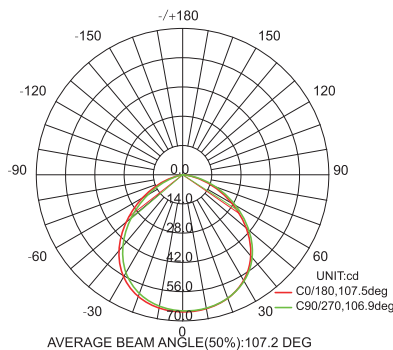
SKU's Available

PK-S-2.2W-2700K-DIM    PK-S-Trim-BLK-DIM  
 PK-S-2.2W-4000K-DIM    PK-S-Trim-NKL-DIM  
 PK-S-2.2W-6000K-DIM    PK-S-Trim-WHT-DIM



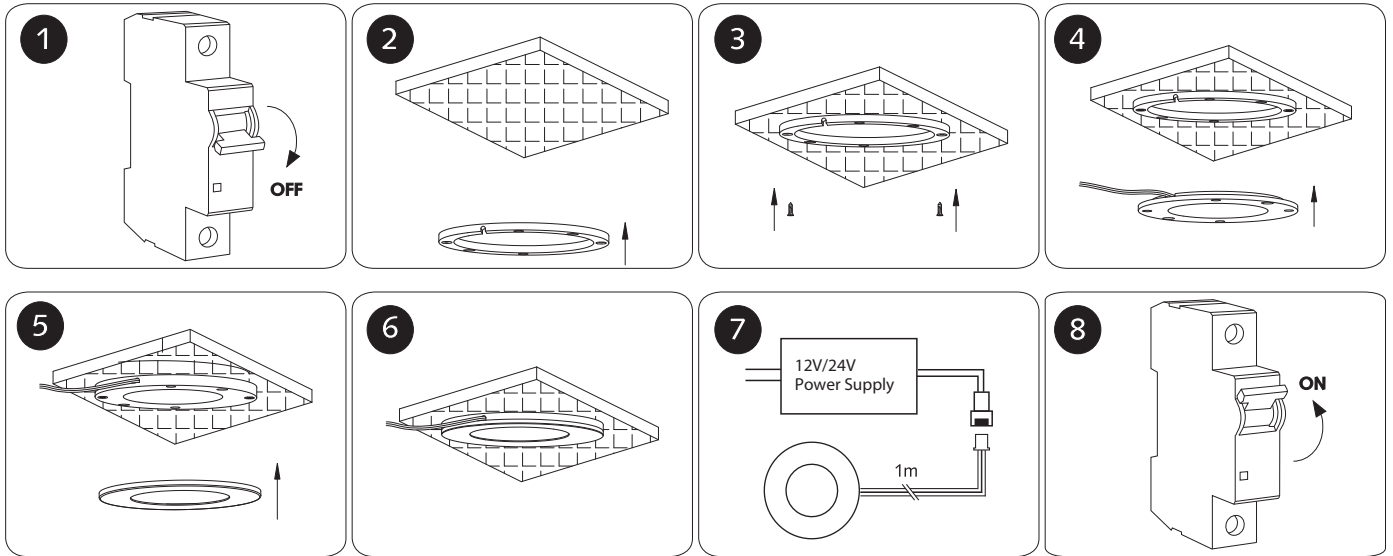
## Goniophotometers System Test Report

110°	H(m)	Lux	Ø(cm)
	1	50.2	239.38
	2	12.55	478.77
	3	5.578	718.15
	4	3.137	957.54
	5	2.008	1196.9

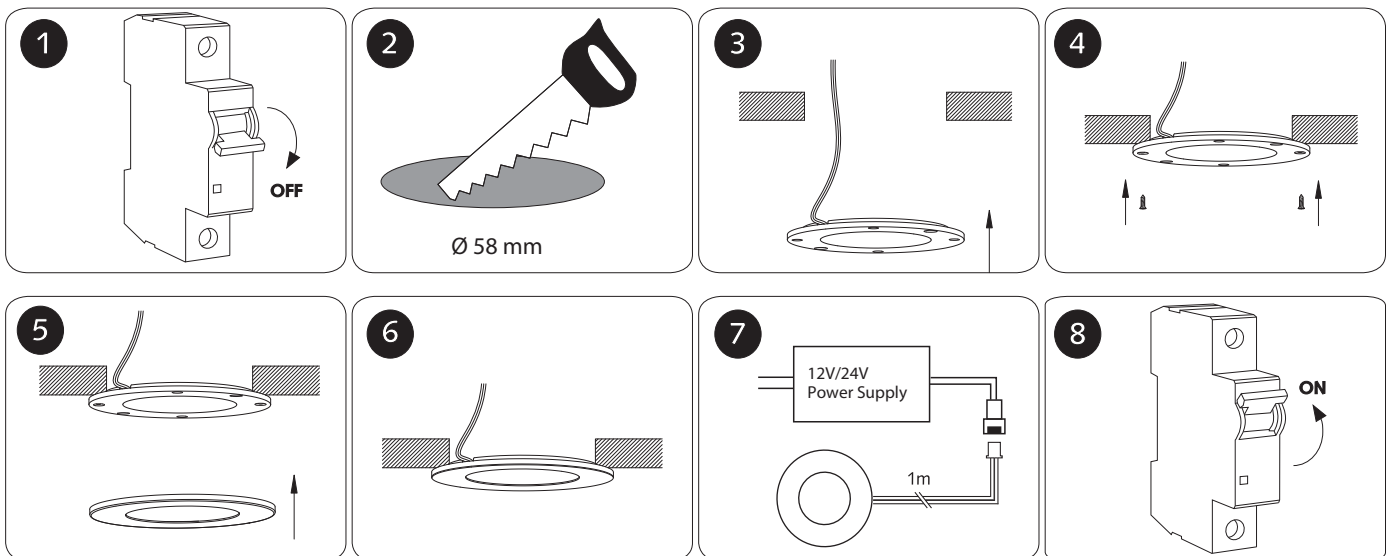


## Installation

### Surface mounting



### Recessed mounting



### Application

- Cabinet light
- Closet light
- Display case
- Jewelry store
- Museum
- Walkway
- Household
- Hotel
- Entertainment places, etc.



### Packaging

Packaging Measurement	Master Carton
Unit per Carton	100pcs
Dimension	45*45*27cm
Net Weight / Gross Weight	15kgs / 16 5kgs